

HDSO14P



Four-Post Lifts

SKU# 5175152

14,000-lb. Capacity, Four-Post Lift, Open-Front

Questions? Contact BendPak's Sales Team

sales@bendpak.com | 1-800-253-2363

Monday - Friday, 7AM to 4:30PM PST

Open-Front Capability in a Powerful Car Lift

The HDSO14P is a legendary 14,000-lb. capacity [open-front four-post car lift](#) that allows easy entry and exit beneath a vehicle. It is available with optional drive-thru ramps, drip trays and rolling jacks. The HDSO14P is an open-front four-post lift that features clear entry upfront, providing easy vehicle access. A generous 14,000-lb. lifting capacity and extended runways allow you to service a wide variety of vehicles, ranging from small cars to full-size trucks.

Features

- CE Approved and Certified. Meets or exceeds the standards prescribed by European Standard EN 1493
- Huge cable sheaves reduce wear and tear
- Extremely convenient open-front design for easy access
- Extended runway length for servicing
- Longer approach ramps for low ground clearance vehicles
- Electric / hydraulic power system
- Runways include rail-kit for optional accessories
- Runways adjust for different tread widths
- Automatic leveling system with multiple auto-leveling locking positions
- Single hydraulic cylinder mounted underneath runway
- Fully enclosed lifting cables, safety locks, and sheaves
- Internal anti-sway slider blocks in each column
- Pneumatic push-button safety release
- Features heavy-duty 1/2" aircraft cable
- Safety locks enclosed in columns minimize pinch points
- Oversized sheave diameter reduces cable fatigue
- Runways feature a durable matte finish
- Rugged, self-lubricating cable sheaves
- Features 1-3/8" sheave axles
- Multi-position safety locks in each column
- Independent backup slack-cable safety latches
- Includes fully adjustable lock stops for precise leveling
- Integrated rolling bridge airline kit option available
- Roll-back kit options available
- Optional drive-thru ramps available
- Optional drip trays available
- Optional 7,000-lb. capacity rolling jacks available



Open-front design

We engineered the HDSO14P without a front cross bar, so operators can easily enter and exit from beneath the vehicle. Now the process of front-end adjustment becomes quick and trouble-free. This model is a must-have for busy alignment bays.

Patented, adjustable front outrigger tubes

For precise front-lift leveling, nothing beats our patented adjustable front outrigger tubes. The infinitely adjustable pitch compensates for excessive loads and unlevel floors.

Dependable design

Four high-quality, stainless steel lifting cables and a single hydraulic cylinder mounted underneath the runway make this lift the most durable, maintenance-free lifting system on the market.

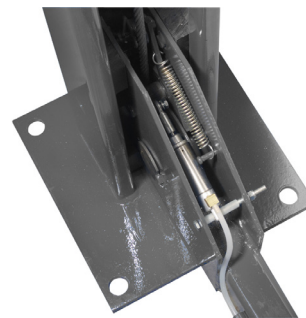
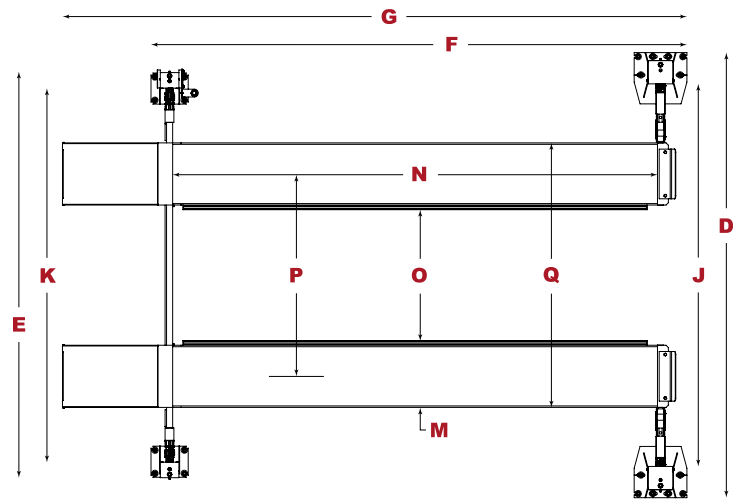
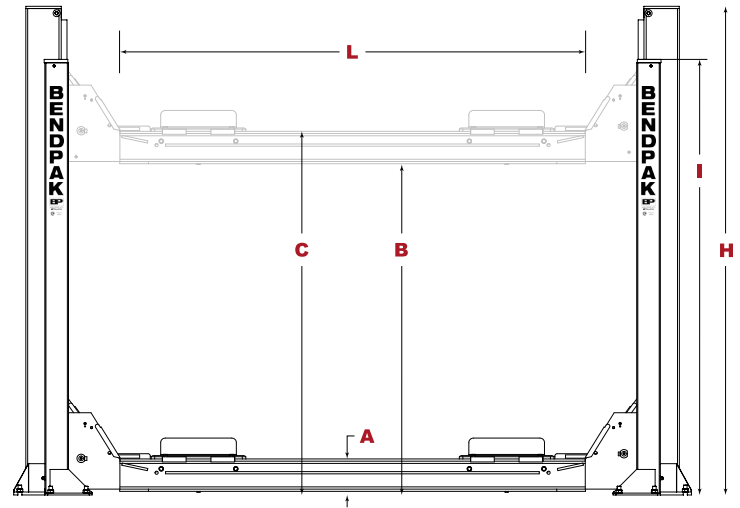
Multi-level locking positions

The HDSO14P is equipped with multiple adjustable height locking positions for variable-height parking. A convenient push-button pneumatic safety lock control releases all four independent safety locks simultaneously.

Specifications



Model	HDSO14P
Style	Open-Front Four-Post Lift
SKU#	5175152
Lifting Capacity	14,000 lbs. (6,350 kg)
A - Min. Runway Height	7-5/8" (192 mm)
B - Max. Rise	70" (1,778 mm)
C - Max. Lifting Height	77-5/8" (1,970 mm)
D - Overall Width (FRONT)	143" (3,632 mm)
E - Overall Width (REAR)	130" (3,301 mm)
F - Outside Length	215.5" (5,473 mm)
G - Overall Length	244" (6,198 mm)
H - Height of Columns (FRONT)	105" (2,664 mm)
I - Height of Columns (REAR)	103" (2,613 mm)
J - Width Between Columns (FRONT)	123" (3,124 mm)
K - Width Between Columns (REAR)	120" (3,046 mm)
L - Drive-Thru Clearance	97" (2,464 mm)
M - Runway Width	20" (508 mm)
N - Length of Runways	199" (5,054 mm)
O - Width Between Runways	45" (1,143 mm)
P - Runway Centerline	65" (1,651 mm)
Q - Outside Edge of Runways	85" (2,159 mm)
Min Wheelbase @ Capacity	140" (3,556 mm)
Min Wheelbase @ 75% Capacity	120" (3,048 mm)
Min Wheelbase @ 50% Capacity	100" (2,540 mm)
Min Wheelbase @ 25% Capacity	80" (2,032 mm)
Time to Full Rise	60 seconds
Locking Positions	13
Lock Spacing	every 4" (102 mm)
Motor	220 VAC / 60 Hz / 1 Ph



An air supply (minimum 30 psi / 3 CFM) is required for the safety-lock mechanisms to disengage. It is solely the responsibility of the end-user to provide, install and maintain the air supply.

Not all BendPak lift models meet the standards as prescribed by ANSI/ALI ALCTV-2017 or ANSI/UL 201. Consult www.autolift.org for a complete list or contact BendPak via contact@bendpak.com.